

**THE**

**a**

**b**

**c**

**s**

**OF  
CHILDREN'S  
MUSEUM OF  
PITTSBURGH**

**A STORY OF YEARS 2024-2025**



# Thank You, Broadhurst Family and Bob Denove!

The Broadhurst Family exemplifies what makes Pittsburgh such a great place for children.

We were honored to recognize the family with the Great Friend of Children award in appreciation of their multigenerational commitment to the welfare and education

of children. Suzy, Jim and their family have long championed joyful learning experiences. Their deep-rooted dedication includes active nonprofit board service by Sheryl and Jeff, Jen and Brooks and Amy and Mark. Jen has served on the Children's Museum board for 22 years, including four years as board president.



This story is dedicated to Bob Denove, who has served on the Board of Directors of the Museum for more than 30 years. Bob's generosity, diligence and commitment have touched every corner of the Museum. We are so grateful for Bob's many years of service and honored to name him as a new Emeritus Board member.



Antoinette wants to give her mom,  
Queenie, the perfect gift. But what do you  
give someone who has everything?

"I know where to go," says Antoinette.

"The Children's Museum is  
filled with wonderful things A to Z.  
Surely, I can find the perfect gift there."

Antoinette gathers all her courage and  
begins the search for something her mom  
will treasure forever.

Illustration  
and Design by  
Kara Reid





# Ad art



**EACH YEAR**, Children's Museum of Pittsburgh welcomes art installations and adds artwork to our permanent collection, sharing real art with children and families.\* In 2024–2025, Tough Artists

La Vispera (Kelly Jimenez and Alejandro Franco), Bryce Li and Sydney Parcell created site-specific artworks that withstood the enthusiasm of hands-on interaction. The Fine Foundation supported the 15<sup>th</sup> year of the Fresh, Innovative, Non-Stop Expression (F.I.N.E.) Residency, which invited 14 artists to create a collaborative installation and conduct workshops and live demonstrations for children and families. Artist and dancer Kaila Carter presented "Now You Don't See Me," and Claire Celeste Börsch installed a cut paper assemblage celebrating biodiversity and native Pennsylvanian flora and fauna.

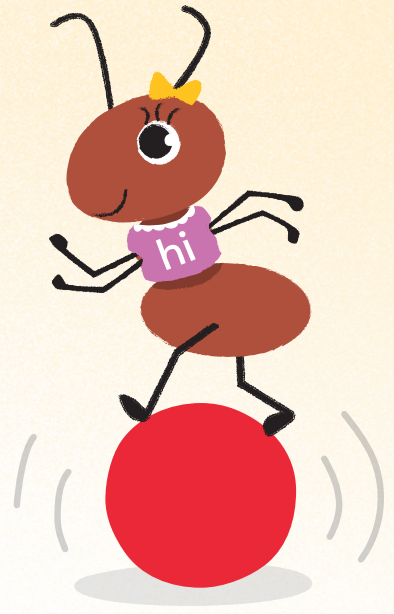
\* Much of the art in our collection has been donated by generous community members. We recently accepted gifts of art and objects from Cecile H. Levenson and Laurence E. Paul. Thank you!





# Bb

## balls



**DID YOU EVER WONDER** how many balls bounce and roll through the Children's Museum? There are 675!\*

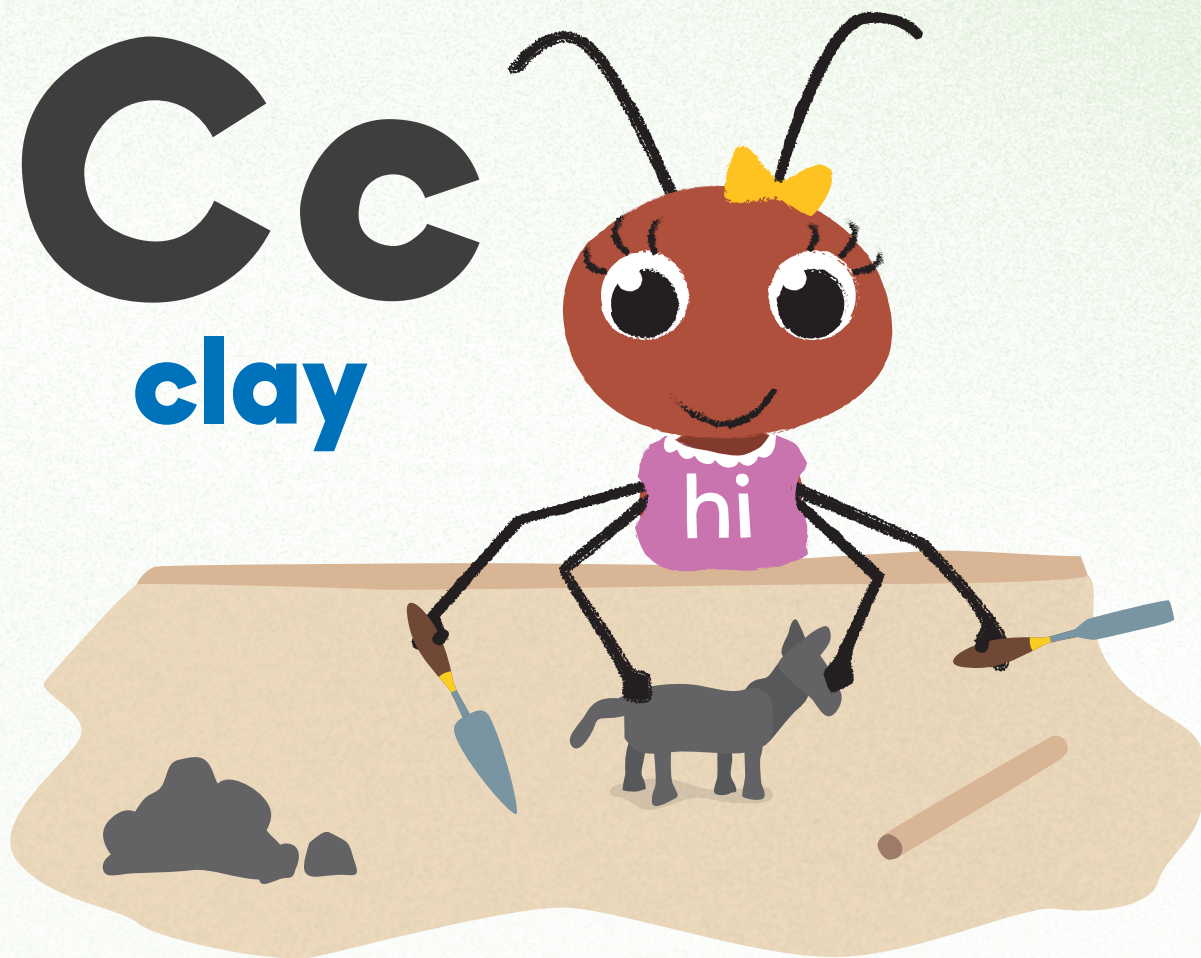
In order of magnitude: "Lake Light" by Issac Levine contains 480 balls; "Orange Circles" by Gregory Witt, 60; the wind machine has 37; "The Beast" by Nova Jiang has 27; and "The Music Machine" designed and built by the Museum's Creative Experiences team has five. "Slowly Rolling Pulley Bob Ball Machine" by Henry Loustau (a gift of the Perelman family) has three.

\* Ball census varies based on contents of the changing exhibit gallery and the number of balls that survive a rough day of play. Balls for purchase in the gift shop are not included.



# Cc

## clay



**LIKE MOLDING CLAY**, our professional development programs shape the future of the museum field. In 2023, we launched MuseumLab for Museum Professionals (MLMP), an eight-month immersive program sparking creative innovation to help museums adapt to today's diverse audiences. MLMP participants design exhibits and programs that champion creativity, authenticity, technology integration, accessibility and emotional engagement. Participants collaborate with seasoned exhibit professionals to transform bold ideas into tangible, interactive experiences through an iterative design process.



# Dd

## donkey

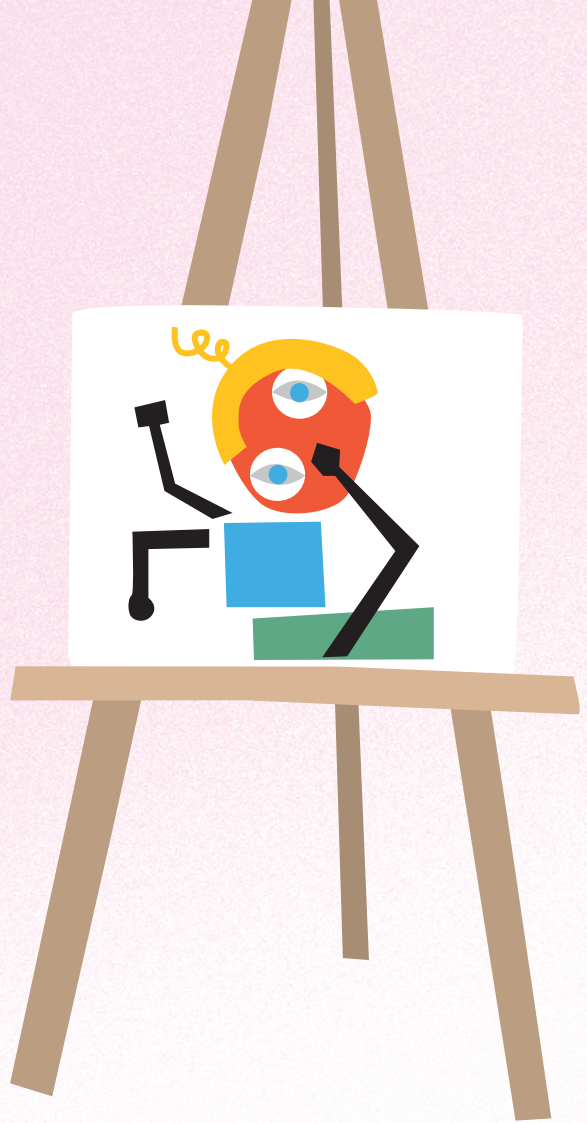


**OUR DONKEY**, found in the Lobby, was made by Nek Chand (1924–2015), an Indian self-taught artist known for creating the Rock Garden of Chandigarh, made entirely from recycled materials, rubble and found objects. He secretly built the garden starting in 1965, transforming demolished village sites into the massive 25-acre sculpture garden. Discovered in 1972, the garden became a national treasure. In 2019, our Museum was gifted 49 Chand sculptures by the National Children's Museum, where Chand, in the early 1980s, completed his first works outside of India.



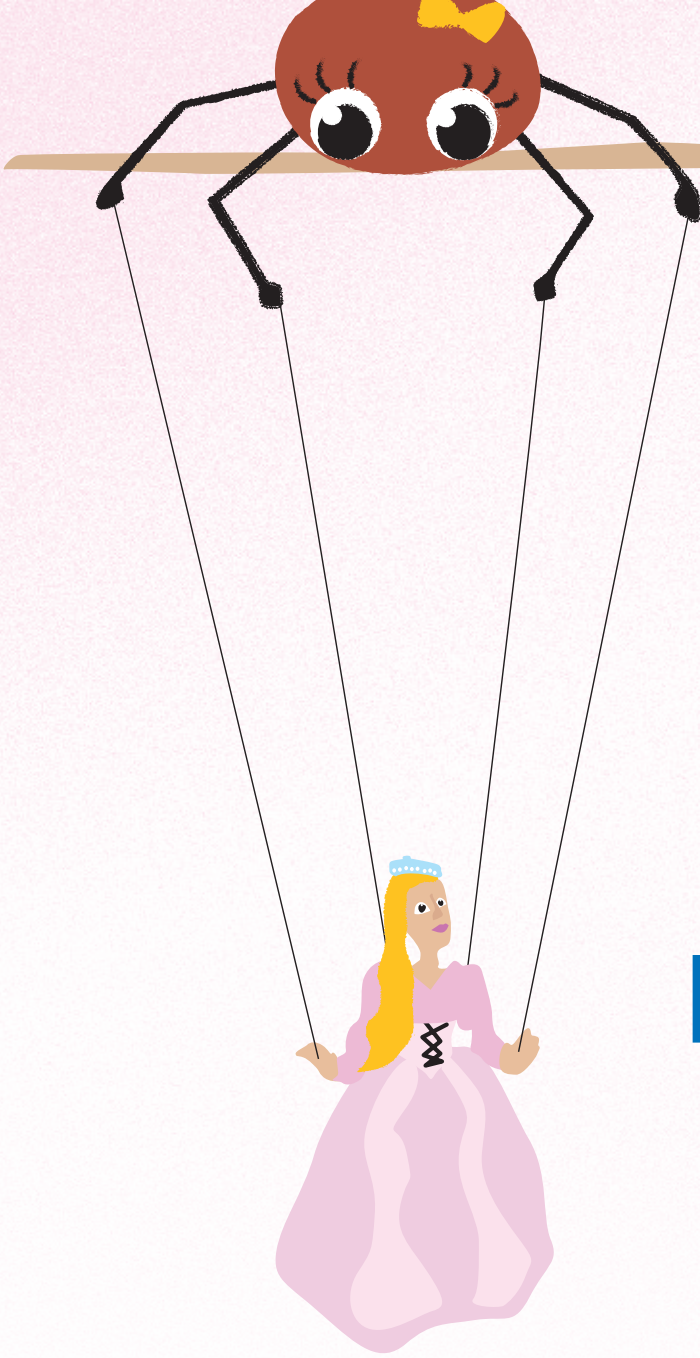
# Ee

## easel



**EASELS ARE JUST ONE** of the many tools that spark creativity in the Children's Museum's Art Studio. Thanks to generous donors like you, we keep our shelves stocked with art materials like paper, paint, ink and clay. These same materials are used by artists whose works inspire our exhibits. "I AM WILD: A Charley Harper Exhibit," launched in January 2025 with support from PPG Foundation, was inspired by Harper's iconic style celebrating the beauty of animals, insects and birds. In the Art Studio, visitors can channel Harper's spirit of creativity through hands-on activities that empower each child to express their unique artistic voice.





# Ff

## fairy puppet

**MANY OF THE PUPPETS** on display at the Museum are from the collection of renowned puppeteer, Margo Lovelace. Lovelace was best known for her Lovelace Marionette Theatre Company, which operated on Shadyside's Ellsworth Avenue from 1965 through 1978, and then at the Carnegie Museum of Art Theater until her retirement in 1985. When Lovelace retired, she donated her puppets, including the fairy puppet, to the Children's Museum.



# Gg

giraffe







# Hh heron

**TIM KAULEN'S ARTWORKS** Steel Giraffe (2009) and One Great Blue (2005) honor Pittsburgh's industrial past and creative present. Kaulen studied at the Art Institute of Pittsburgh and founded the Industrial Arts Workshop, a Hazelwood-based non-profit that teaches welding and creative arts to young people. Many children who take part in metalworking programs at the Children's Museum progress to pursue Industrial Arts Workshop programs.



# Ii ice



**THE MUSEUM IS PARTNERING** with Pittsburgh Penguins Foundation and the Claude Worthington Benedum Foundation to spark interest in youth hockey and make science-learning fun and engaging through Penguins Science Champions. This partnership kicked off with a joy-filled extravaganza for educators on the ice at PPG Paints Arena, where they brainstormed curriculum ideas in short, hockey-style periods and created lesson plans to design hockey gear improvements, optimize Zambonis and use team mascots as a gateway to animal and habitat education. Penguins Science Champions will help educators in Pennsylvania and West Virginia align with new Science, Technology & Engineering, Environmental Literacy & Sustainability (STEELS) standards by co-creating a fun and engaging science curriculum for second and third grade classrooms.



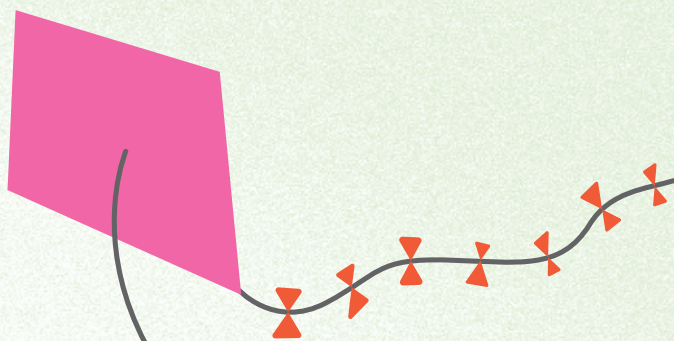


11



# Kk

## kites



**LIKE A KITE** soaring high, the Museum is proud to have received the following awards and honors:

- Named as one of the top two children's museums in USA Today's 2025 10Best Readers' Choice Awards
- PA Museums' 2024 Special Achievement Award for "Aim High: Soaring with the Tuskegee Airmen"
- Association of Midwest Museums' 2024 Best Practices Award for "Aim High: Soaring with the Tuskegee Airmen"
- Mid-Atlantic Association of Museums' 2024 Making an Impact Award for "Aim High: Soaring with the Tuskegee Airmen"
- TREX Award for 2025 Most Innovative Interactive Exhibit for "I AM WILD: A Charley Harper Exhibit"
- Cat Burton, Creative Producer, selected as a 2024 fellow of the Communicating the Arts 30 Under 30 program
- Teona Ringgold, Director of Culture & Community Impact, named in Pittsburgh Business Times' 30 Under 30 and New Pittsburgh Courier's FAB 40 Under 40 lists
- Jane Werner, Executive Director, received the Smart Business Smart 50 and IMPACT Awards
- American Institute of Architects' 2025 National Interior Architecture Award for MuseumLab

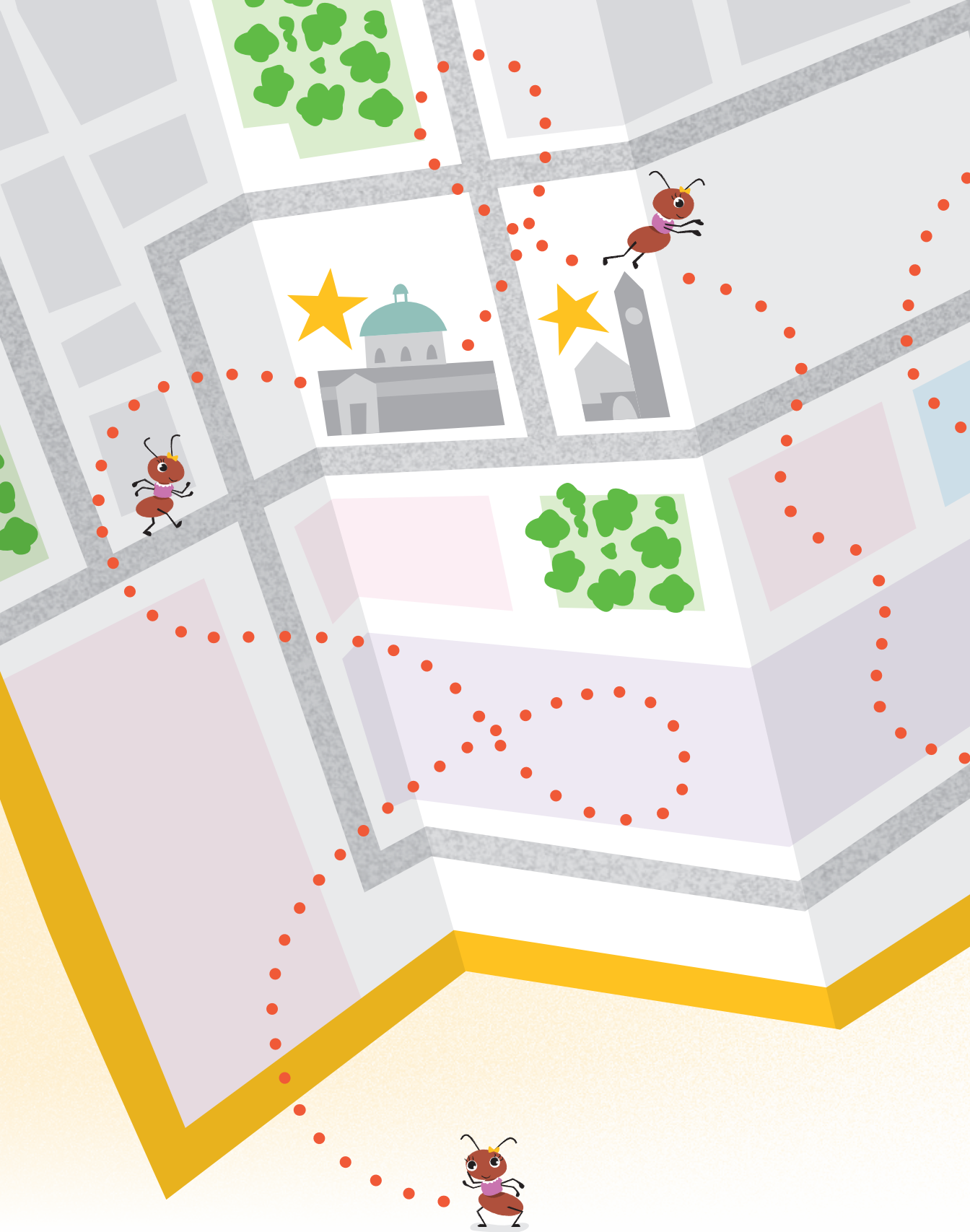


# LI lozziwurm



**THIS PAST SUMMER,** the Backyard underwent the first phase of renovations with the unveiling of “Lozziwurm,” donated by Carnegie Museum of Art. “Lozziwurm” is a playful, tubular sculpture first designed by Swiss artist Yvan Pestalozzi in 1972. The winding, worm-like shape is meant for climbing, crawling and imaginative play. The Backyard renovations will blend art and nature through innovative, contemporary art experiences for children and families. This phase of the Backyard refresh was supported by Richard King Mellon Foundation. We will continue the transformation in 2026–2027 with additional support.





# Mm map



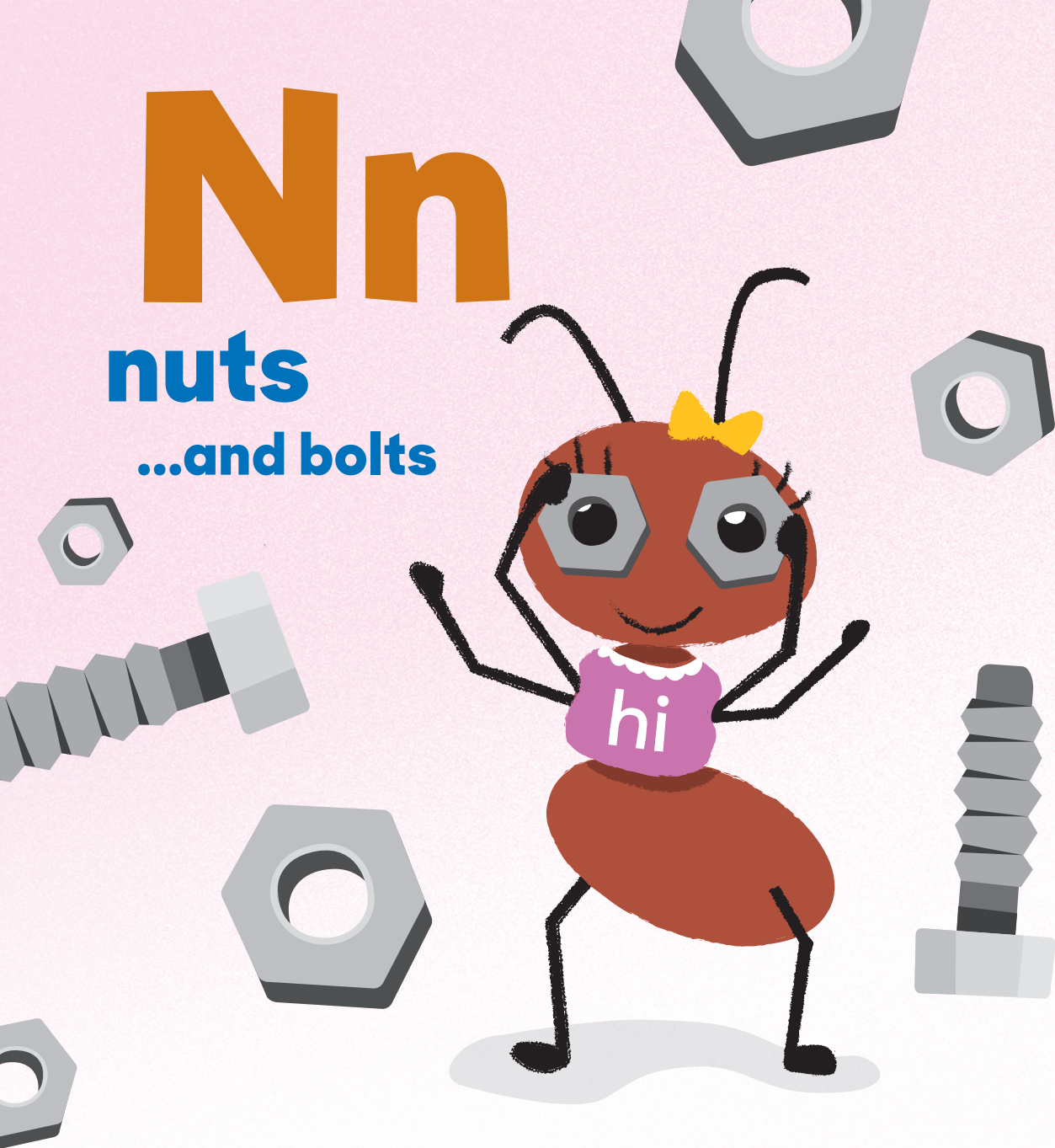
**CHILDREN'S MUSEUM OF PITTSBURGH** is mapping our way to the future! Making innovative and inclusive exhibits and experiences is at the heart of our mission, vision and values. We are currently raising funds to renovate a vacant property less than a half mile away to create the Annex, a workshop to envision, design and build the Museum's unique and profitable traveling exhibits and exhibit components. The Annex will also provide space for the Museum's artists-in-residency programs. This addition to our campus map will strengthen our practice of iterative prototyping and playtesting with visitors, and is vital to our earned revenue growth.



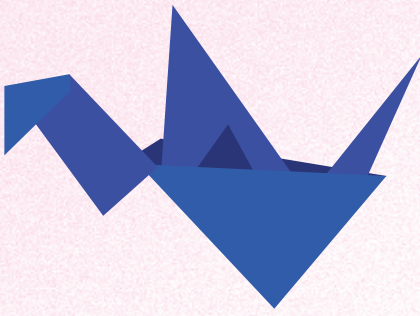
# Nn

## nuts

## ...and bolts

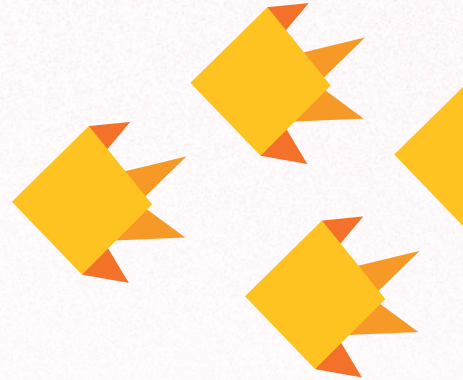
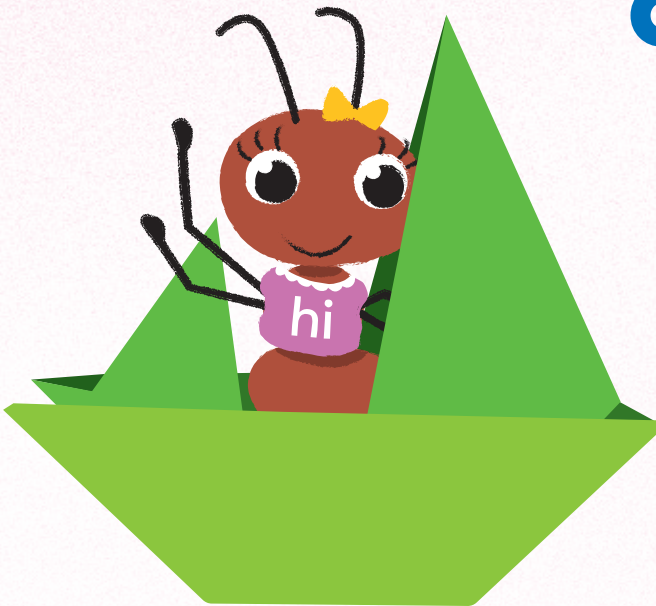


**IN FISCAL YEAR 2025**, we welcomed more than 275,000 guests including more than 50,000 individual members and nearly 15,000 field trip attendees. With the help of 552 donors, we delivered programs, exhibits and activities for 329 days of joyful learning. Our on-campus partners – Reading is Fundamental, SLB Radio Productions, Allies for Children, Manchester Academic Charter School and Pittsburgh Public Schools Pre-K – help us build strong foundations for children, one nut and bolt at a time.



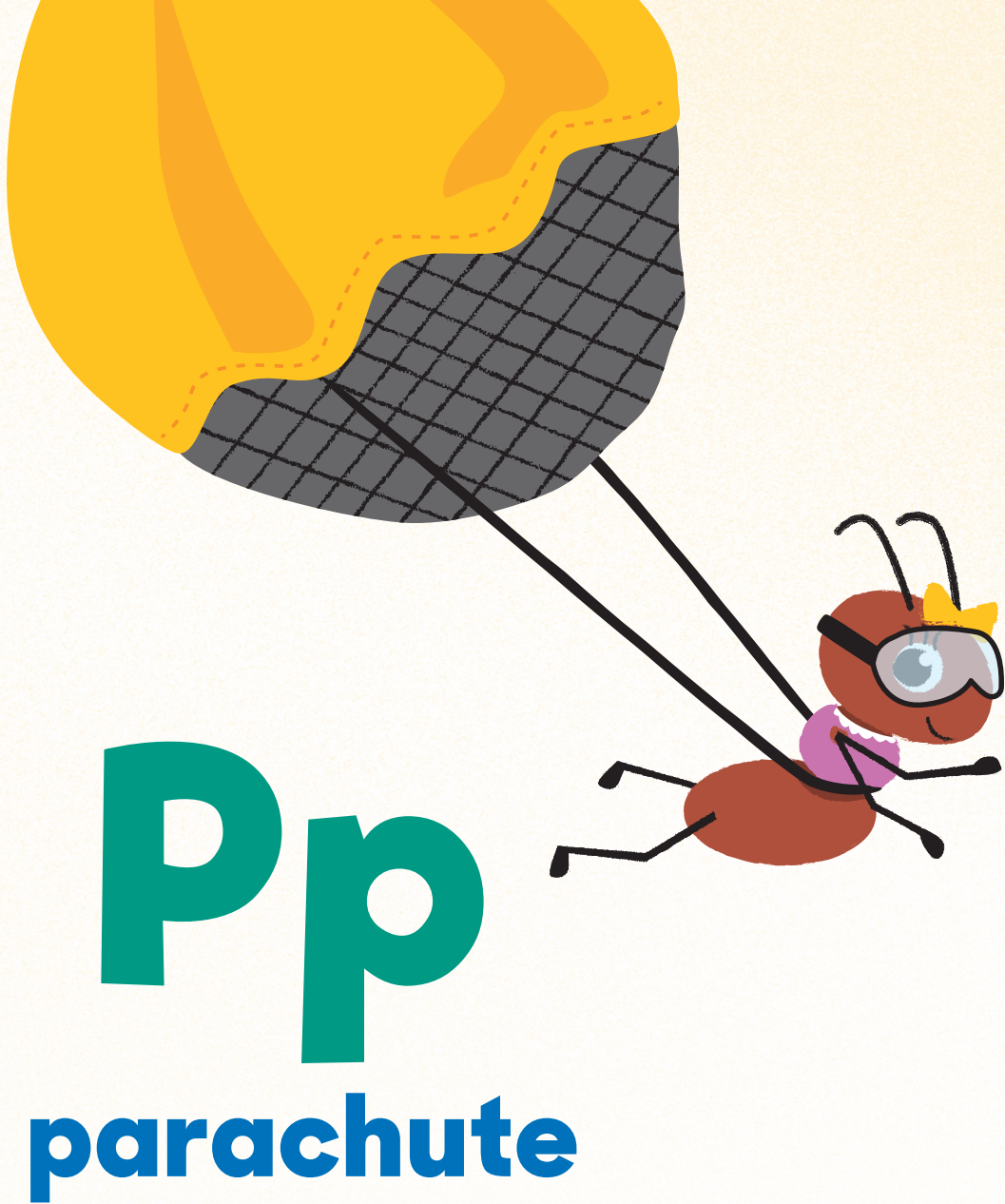
Oo

origami



**EACH WEEK**, the Museum offers drop-in early childhood programs that provide fun and developmentally appropriate hands-on learning experiences for children ages 0-5 and their caregivers. Programs are free with Museum admission and, like folding origami, provide opportunities for our youngest visitors to develop fine motor skills and hand-eye coordination, explore music and movement, learn about plants and animals, build literacy, use their senses and develop science skills. In the past year, we served more than 3,500 individuals through drop-in programs.





**THE CHILDREN'S MUSEUM** continues to lead the field in interactive exhibit design. Like a parachute, the entrepreneurial revenue earned from traveling exhibits, exhibit sales/licensing and design consulting provides stability and lift in our operating budget. This revenue has grown year over year since 2015. In fiscal year 2025, revenue earned from this work reached nearly \$2 million, with traveling exhibit revenue exceeding \$1.4 million. Since 2020, our 11 traveling exhibits were presented at 56 venues in 27 states, reaching 6,054,779 children and families.





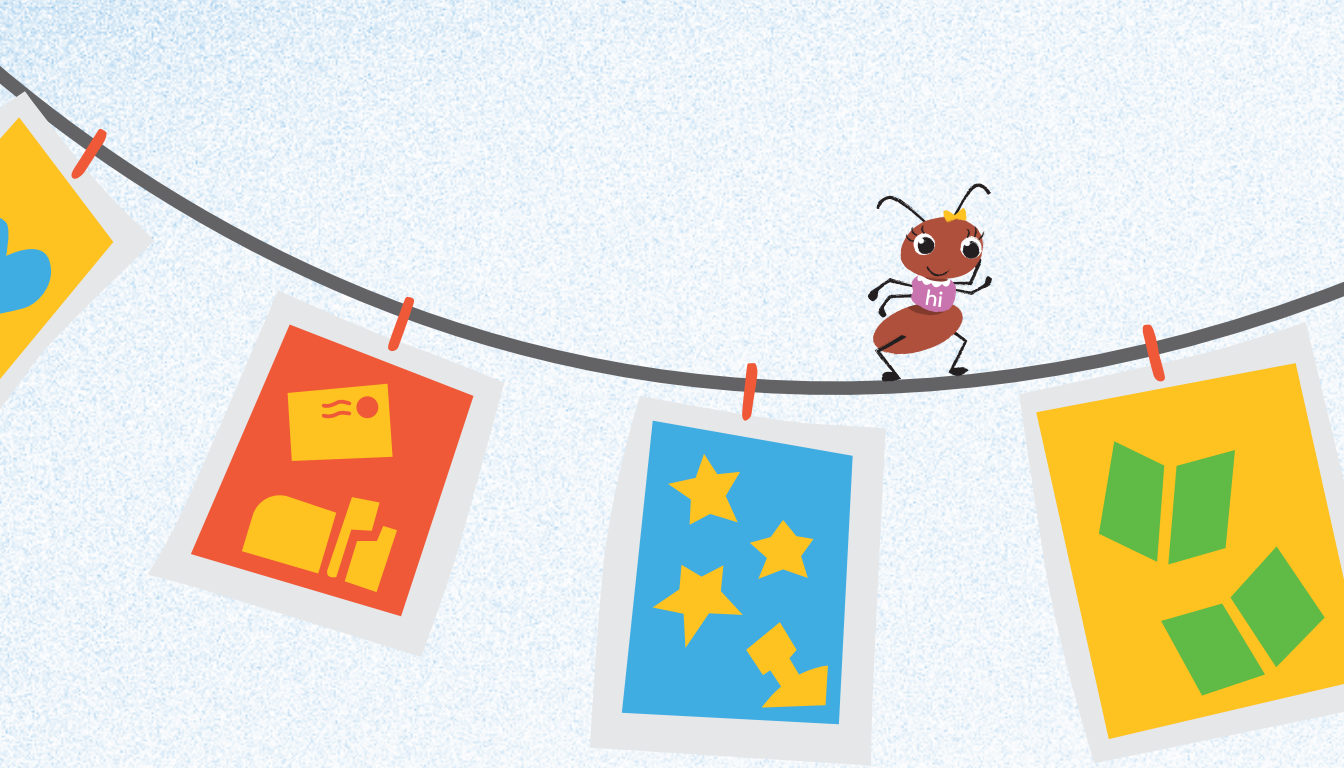
**ACCESSIBILITY IS STITCHED** into everything we do. We are thankful that a patchwork of supporters like you help reduce barriers to visiting the Museum by donating to our free or reduced admission offerings like Museums for All, which provides significantly reduced admission for families using ACCESS or EBT cards. Through the Education Improvement Tax Credit program, corporate partners and qualifying individuals can benefit from tax credits by underwriting free tours for Title 1 schools and need-based camp scholarships. Free admission is also supported in part by the taxpayers of Allegheny County through the Allegheny Regional Asset District RAD Pass for library cardholders.



# Rr rollercoaster

**LIKE ANY GOOD ROLLERCOASTER**, this past year has had twists, turns, highs and drops. One dramatic turn was the abrupt cancellation of five grants from the Institute of Museum and Library Services (IMLS) and National Science Foundation (NSF). Since 2000, we have leveraged more than \$6 million in federal grants to develop many vital museum programs, including developing MAKESHOP®, teaching adults the power of simple interactions with children, employing artists in our Tough Art residency, advancing STEM learning and training future museum professionals. We are exploring new tracks to continue this essential work.





# Ss

## silkscreen

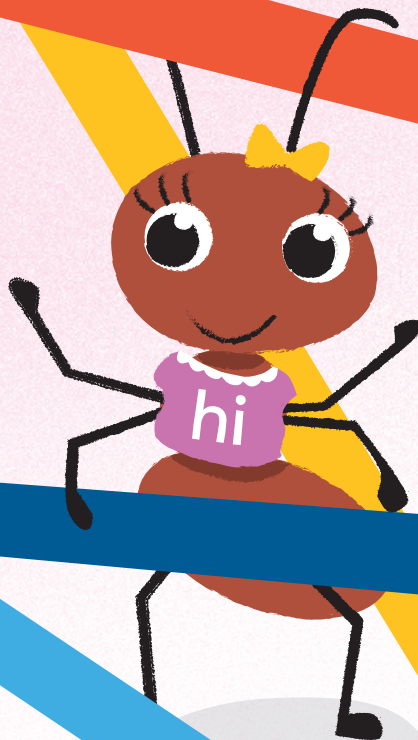
To donate  
newspaper to  
the Museum,  
please call us at  
412-322-5058.

**FROM THE BUILDINGS** we inhabit to the materials children use, the Children's Museum is built around making the most of what we have.

A former post office, a former planetarium and a former library now annually see more than 275,000 children and caregivers, students and teachers, creatives and makers of all ages.

And 300 pounds of donated newspapers were used to create 100,000 silkscreened prints proudly hung in family art galleries.

# Tt tape



## **TAPESCAPE 4.0**

is coming to the Museum in January 2026. This remarkable temporary climbing structure made of scaffolding and hundreds of rolls of common packing tape was previously created here in 2013, 2016 and 2019. This version will offer a unique matrix of tape tunnels intricately woven around a metal frame to form a mesh of pathways and slides. Artist Eric Lennartson will create this exhibit with assistance from volunteers and Museum staff. Art and making activities with all forms of tape – a Tapeapalooza! – will complement the exhibit.



# Uu umbrella



**UNDER MANY UMBRELLAS** and a big tent, we celebrated the Great Night Gala with gala chairs Eric and Betsy Boughner. Suzy, Jen and Cora Broadhurst represented the Broadhurst Family, who were honored with the Great Friend of Children Award. As owner-operators of Eat'n Park Hospitality Group, the Broadhursts have fostered a sense of community for generations by welcoming families to share meals and millions of beloved Smiley® Cookies. Their generosity and commitment to Pittsburgh's families extends beyond their restaurants, touching lives through their service to nonprofits focused on the welfare and education of children.



# Vv

## vegetables



**THANKS TO THE BALL FOUNDATION**, the Museum is turning aluminum cans into a garden with a grant to support single stream aluminum recycling infrastructure and recycling education. As cans are recycled, proceeds help grow our Garden exhibit, where children plant, tend and harvest vegetables and herbs – nurturing both the earth and young minds.



# Ww

## Warhols



**MAKE WAY FOR THE WARHOLS!** Andy Warhol was a prominent American artist and filmmaker born in Pittsburgh. The Children's Museum owns 10 screen prints from Warhol's *Myth Series*, which depict childhood-related figures from twentieth-century America. These prints are frequently on display in spaces like our Kindness Gallery, the Buhl exhibit hallway and MuseumLab's Grable Gallery.



# X x

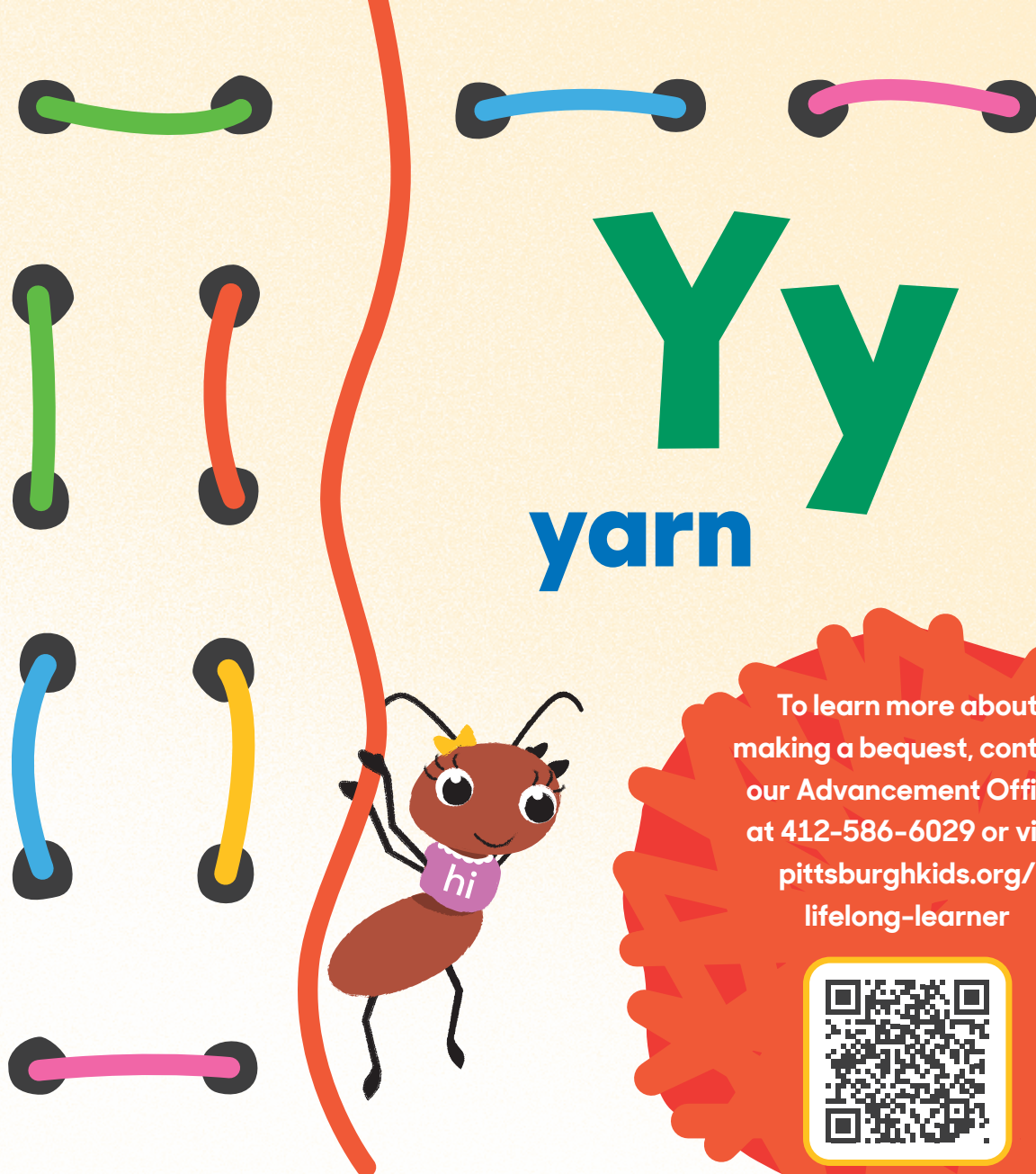
## X the Owl



**WITH A GRANT** of \$2.49 million from Lilly Endowment Inc.,\* the Children's Museum is partnering with Fred Rogers Productions to develop a new permanent exhibit, traveling exhibit and companion programs and resources that explore kindness, generosity, compassion, respect, bravery, resilience and other character traits that help in the development and exploration of character in young children. The exhibits, set to open in 2026, will draw inspiration from beloved shows including Donkey Hodie, Daniel Tiger's Neighborhood and Mister Rogers' Neighborhood (home to X the Owl).

\* This funding follows a one-year planning grant from the Lilly Endowment Inc. which allowed the Museum to explore ideas through community events, focus groups and prototype testing.

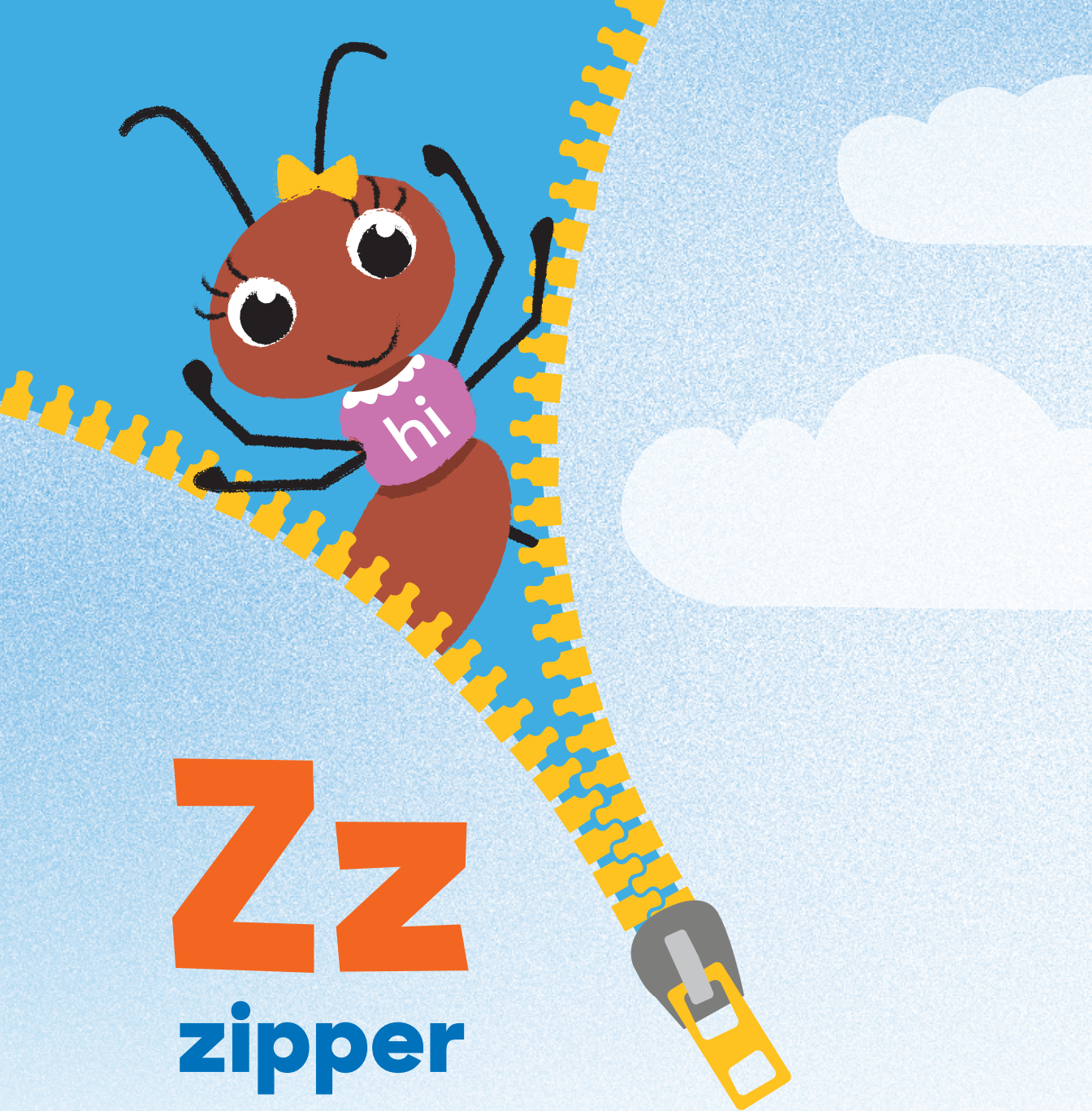




To learn more about making a bequest, contact our Advancement Office at 412-586-6029 or visit [pittsburghkids.org/lifelong-learner](http://pittsburghkids.org/lifelong-learner)



**JUST AS A FIBER ARTIST** carefully chooses how to use each skein of yarn, you can shape your legacy by including the Children's Museum in your will or estate plan. A bequest allows you to retain full control of your assets during your lifetime while ensuring that what remains supports creativity, learning and joy for future generations. Whether it's a specific gift or a portion of your estate, your bequest will help weave your values into the lives of children and families for years to come.



# Zz

## zipper

**WITH SO MUCH** to see and do at the Museum, sometimes, a child can zip away. That's why our commitment to safety is so important. From the bracelets children wear with their grownup's phone number to the Code Adam protocols we practice, we make sure that families who are separated in the heat of play are reunited as quickly and smoothly as teeth of a zipper coming together.



"Oh, Mom," says Antoinette.

"I searched all over the Children's Museum for the perfect gift for you. I found jewelry and puppets and even a giant giraffe, but none of those felt right."

"Antoinette," exclaims Queenie as she gathers her in a big hug, "if you aren't too tired, I know exactly what I want."

"What?" asks Antoinette.

"I want spend the rest of this beautiful day with you at the Museum. Time spent together making and playing is the best gift I could ask for!"





# Leadership

## BOARD OF DIRECTORS

### Officers

Kevin D. Braun, President  
PPG Industries, Inc.

Christine Waller, Vice-President  
Duquesne Light Company

Winston M. Simmonds, Secretary  
Hatch

Mike Denove, Treasurer  
EY

Karen L. Larrimer, President ex officio  
The PNC Financial Services Group,  
(Retired)

### Members

Nick Andy, Audia International Inc.

Lee Belitsky, DICK's Sporting Goods  
(Retired)

Melissa A. Bizyak,  
Grossman Yanak & Ford LLP

Samantha Bretz, Boston Scientific

Jennifer Broadhurst,  
Community Volunteer

Christopher Daley, UPMC Health Plan

Barrett Donovan, Bank of America

Michael Duckworth,  
Merrill Private Wealth Management

Quinn Johnson, Reichman Jorgensen  
Lehman & Feldberg, LLP

Thomas A. Karet, ECHO Realty

Jennifer Danquist Kilgore,  
CBRE | FacilitySource

Blaise V. Larkin, Madison Realty  
Group LLC

Richard I. Lerach, Gateway Financial  
Eboné Lockyer, PNC Financial  
Services Group

Matthew Meade, Eckert Seamans  
Cherin & Mellot, LLC

Thomas L. Mole, Techstra Solutions

Katelyn O'Connor, Jackson Lewis P.C.

Imran Qadeer, MD, Allegheny  
General Hospital

Daniel Rooney, Pittsburgh Steelers

Evan Rosenberg, Pittsburgh  
Business Times

Sabrina Saunders Mosby,  
Vibrant Pittsburgh

Roberta L. Schomburg, PhD,  
Carlow University

Jimmi Sue Smith, Koppers Inc.

Robert Stein, University of Pittsburgh,  
Institute for Entrepreneurial Excellence

Keith Webster, Carnegie Mellon University  
Penny Zacharias, McGuire Woods LLP

### Board Emeriti

Carol Berkman<sup>†</sup>

Robert Denove

Henry J. Gailliot, PhD<sup>†</sup>

Anne V. Lewis<sup>\*</sup>

David M. Payne

Ronald W. Wertz<sup>†</sup>

### Advisory Members

Judith T. Horgan

Elin Roddey

<sup>\*</sup> first board emeritus

<sup>†</sup> deceased





# Support

The following individuals, companies, government agencies and foundations helped us make learning experiences possible for children and families by making contributions to the Museum in fiscal year 2025 (July 2024–June 2025). Thank you for your generosity, and we look forward to seeing you at the Museum in 2026.

## Corporate Support

102.5 WDVE

All in Good Taste Productions

All Occasions Party Rentals

Allegheny Health Network

Allora Wine Group

Anonymous

Association of Science and  
Technology Centers

Assured Partners of Pennsylvania, LLC

Atmos Advisory

Audia Group, LLC

BAIRD–Fleming Rodgers Group

Bank of America

Barcelona Wine Bar

BeanSprouts Cafe

big Burrito Restaurant Group

Boston Scientific

Burton Morris Studios

Carnegie Mellon University

CBRE

Children's Hospital of Pittsburgh of UPMC

City Books

Clearview Federal Credit Union

Dentons Cohen & Grigsby

DiAnoia's Eatery

Dollar Bank

Duolingo

Duquesne Light Company

Eat'n Park Hospitality Group, Inc.

ECHO Realty

Eckert Seamans Cherin & Mellott, LLC

Eddie V's Prime Seafood

EF Lighting

Emerson

EY

Faros Properties

Flyspace Productions

Frank B. Fuhrer Holdings, Incorporated

Fred Rogers Productions

Giant Eagle

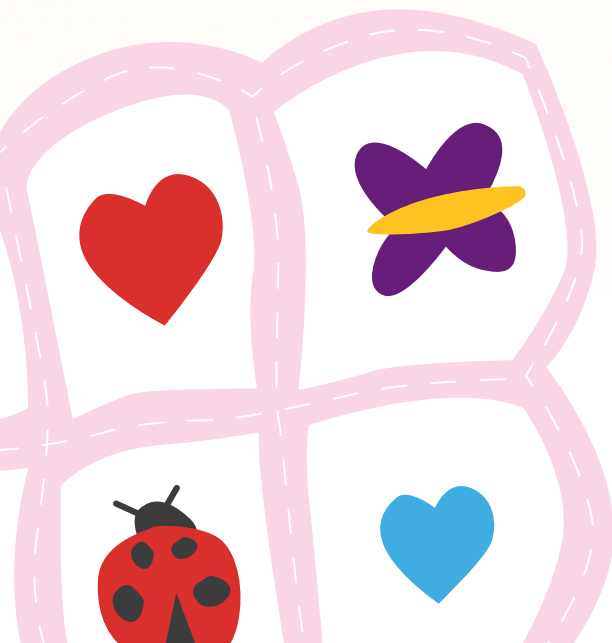
Google, Inc.

Grossman Yanak & Ford LLP

Hand & Shoulder Center and  
Western PA Surgery Center

Hatch

Henderson Brothers, Inc.





## Corporate Support, cont.

Highmark Blue Cross Blue Shield  
Highmark Health  
Highmark Wholecare  
iHeartMedia Pittsburgh  
Iron City Boulders  
J.P. Morgan Chase  
JG Direct Mail Marketing, Inc.  
K&L Gates LLP  
Karndean Designflooring  
Kimpton Hotel Monaco Pittsburgh  
Littler Mendelson, P.C.  
Macy's  
Madison Realty Group, LLC  
McGuireWoods LLP  
Mediterra Cafe  
Merrill Lynch The Duckworth  
Haggerty Group  
Microsoft  
Millie's Homemade Ice Cream  
Monteverdes  
Mountaineer Casino Resort  
NexTier Bank  
Ninja Transfers LLC  
Oakmont Bakery  
Oscar Getz Museum of Bourbon History  
Paper Products Company  
Pipitone  
Pittsburgh Anodizing Company  
Pittsburgh Botanic Garden  
Pittsburgh Steelers  
PNC Bank  
PPG  
Print Management, LLC  
PWWG Architects

RJS Painting Services  
Rush Order Tees  
Schneider Downs & Co., Inc.  
Sienna Mercato  
Society for Analytical Chemists  
of Pittsburgh  
Spectroscopy Society of Pittsburgh  
Techstra Solutions  
The Andy Warhol Museum  
The Capital Grille  
The Fabric Place  
The Industrialist Hotel  
The Picket Fence  
The Speckled Egg  
The University Store on Fifth  
University of Pittsburgh  
University of Pittsburgh  
Department of Athletics  
UPMC  
UPMC Health Plan  
Walnut Grill Holdings  
Washington Wild Things  
Wild Birds Unlimited of Pittsburgh  
Willett Distillery  
Williams Coulson, Stephen J. Pieklik  
Wise County Cafe





## Individual Support

### **\$50,000 +**

Mike Duckworth and Tracy Howe

### **\$25,000-\$49,999**

Lee and Janice Belitsky

Karen and Jim Larrimer

Kirk Burkley and Penny Zacharias

### **\$10,000-\$24,999**

Anonymous

Betsy and Eric Boughner

Jen and Brooks Broadhurst

Mark and Amy Broadhurst

The Burke Family

Adam Kelson and Carly Wilson

Anne V. Lewis and C. James V. Zeszutek

David J. Malone and Amy Baron Brouman

Matthew and Eileen Meade

Evan Rosenberg

Robert Sendall, All in Good Taste  
Productions

### **\$5,000-\$9,999**

Nick and Karli Andy

Vivian and Bill Benter

Lori and Kevin Braun

Robert and Renee Denove

Bill Hopwood

Quinn Johnson and Brian Edleman

Blaise and Katharine Larkin

Margaret S. McCartan

Mary A. McDonough

Timothy and Jessica O'Brien

Clifford and Diane Rowe

Winston and Leanne Simmonds

Bob and Andi Stein

### **\$2,500-\$4,999**

Kevin Acklin

G. Nicholas and Dorothy Beckwith III

James Benedict

Bill and Debbie Demchak

Barrett Donovan and Nora Minahan

Curt and Kim Fleming

Sally and Pat Getty

Eboné and Greg Lockyer

Al and Dana Madison

Kevin and Amanda McQuillan

Gene Nacey

Robert and Christine Pietrandrea

Jimmi Sue and Matthew Smith

Christine Waller and Pedro Maiz

Jane Werner and Robert Rutkowski

### **\$1,000-\$2,499**

Jon Adams and Samantha Creighan

Anonymous, 3

The Barber Family

Jim and Suzy Broadhurst

Susan and David Brownlee

Christopher and Bridget Daley

Dana and Mike Denove

Susie and Roy Dorrance

Michelle Figlar

Chris and Dawn Fleischner

Bruce and Ann Gabler

Cordelia Glenn Grabiak

David and Amelia Grubman

Lisa Haley





## Individual Support, cont.

Judy Horgan and Steve Pavsner  
Chris Horne  
Jennifer and Todd Kilgore  
Dr. Elaine A. King  
Richard I. Lerach and Elizabeth E. Krans  
Kent and Martha McElhattan  
Andrew Medlar and Brian Aker  
Tom Mole  
Jacky Nasr  
Mr. and Mrs. David M. Payne  
Megan Reimer  
Julie and Patrick Rooney  
Carsen Ruperto  
James Sharpnack  
Mr. and Mrs. John A. Staley IV  
Thea and Dick Stover  
Matthew Teplitz and Sue Challinor  
Beth Wainwright  
Keith Webster  
Marlene and John Yokim

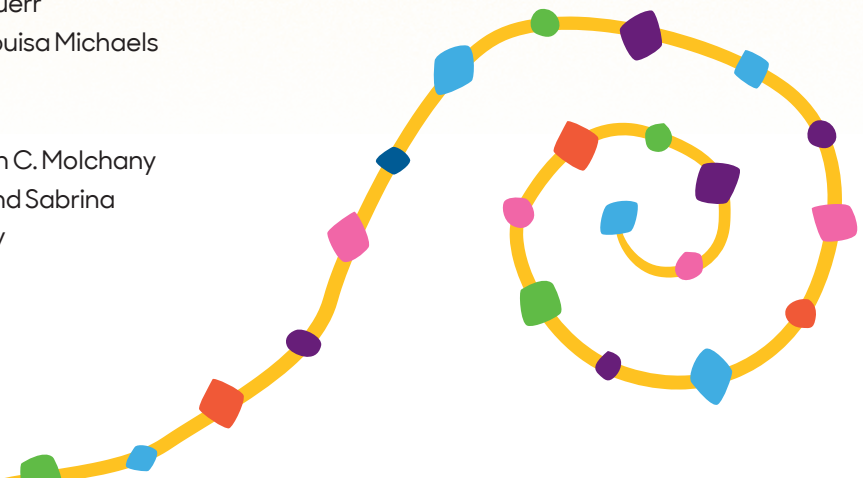
### \$500-\$999

Mamadou and Kelsie Baldé  
Gregg S. Behr  
Michelle Berryman  
Samantha Bretz  
The Chiesa Family  
Lisa and Bruce Coleman  
Roberto and Beth Croce  
Julie and Michael Dever  
Helen and Chris Duerr  
Ethan Eade and Louisa Michaels  
Anne Fullenkamp  
Dave and Liz Hall  
The Honorable Erin C. Molchany  
Brandon Mosby and Sabrina  
Saunders Mosby

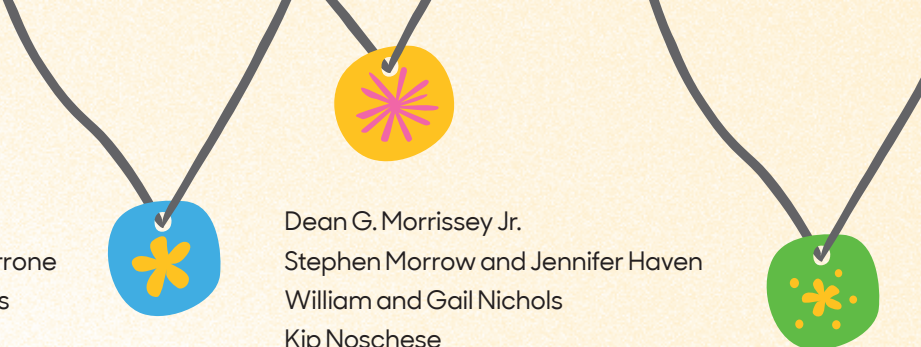
Bradley Ott and Jeanette Bourdeau-Ott  
Jennifer Owen and Cory Cope  
Laurence E. Paul  
Sarah Piot  
Mona and Bob Riordan  
Arnold and Cynthia Rose  
Ellen and Carl Srodes  
Betsy and Tom Teti  
Ann E. Thompson, MD  
Chatón Turner and Andre Smith  
Traci Weatherford-Brown and  
Morton Brown  
John Yerger

### \$100-\$499

Anonymous, 10  
Joseph F. Aracri and Kate Aracri  
Denise and Joseph Augello  
Loretta and Chris Benec  
Jeanne and Richard Berdik  
Rikki and Larry Berger  
Jay Blount and Kate English  
Matt Brennan  
Jeff and Sheryl Broadhurst  
Jack Broadhurst  
John Bruno  
Sue Cardillo  
Joan M. Carlin  
Peggy Carney







Anna Marie Caulkins  
Danny and Shannan Cerrone  
Ben and Tanya Clements  
Anthony Constantine  
The Cozzens Family  
Jessica and Blaec Croft  
David Dault  
Ellen and Gilbert DeBenedetti  
Darla Dillinger  
Frederick Eisenreich  
Jordan Farrell  
Carolyn and Kirk French  
Ryan Fuge  
Lisa Garrett  
Richard and Dana Green  
Norton and Judy Gusky  
Laura Hansen and David Zubrow  
Janet G. Harner  
Neal and Paula Holmes  
Claire and Joe Hosteny  
Motoko Inoue  
Amy Kellman  
Lynn and Milton Klein  
Keith Knueven and Chal Pivik  
Christine and Keith Koebley  
Ken and Lyn Krynski  
Stephen Kuzma  
Chris and Katie Lattimore  
Cecile H. Levenson  
David and Dory Levine  
Danielle Linzer and Sean Carroll  
Geoff and Kelly Locher  
Penny Lodge and Mark Hale  
William Lovas  
George and Roberta Maruschock  
Lynn McMahon  
Rebecca De Stefano McNeil  
Ira Miller  
Marcia Miller

Dean G. Morrissey Jr.  
Stephen Morrow and Jennifer Haven  
William and Gail Nichols  
Kip Noschese  
Ruth Anne and Ralph Papa  
Beth Parisi  
Scott Pipitone  
Bruce and Millie Pipman  
Heather and Thomas Prusak  
Pavel Puchkarev  
Marirose and John Radelet  
Steven Rock  
Todd Rosenfeld  
Lauren Ruane  
Ken and Nora Ruffing  
Jean Saunders  
Adina and Frank Schiffman  
Richard J. and Mary Rodgers Schubert  
Ann Sekely  
Lissa and Josh Shulman  
Paul and Anna Siefken  
Ann Slonaker  
Chef Chaz Smith and Michelle Berryman  
Jamie and Aaron Solak  
Kyle Solomon  
David and Ann Stapor  
Matthew and Jennifer Steenson  
Jack Surma  
Andrew and Christie Tillapaugh  
Bonnie and Tom VanKirk  
Michael and Elizabeth Walton  
Joan Washburn  
Dr. Jen Wildpret, DO  
Frances H. Wilson<sup>†</sup>  
Sam and Anne Zacharias  
Albert Zangrilli

<sup>†</sup> deceased



## Foundation Support

Ampco-Pittsburgh Charitable Foundation  
Anonymous, 3  
Avon Club Foundation  
The Ball Foundation  
Claude Worthington Benedum Foundation  
The Patti and Sandy Berman Foundation  
of the Jewish Community Foundation  
of Greater Pittsburgh  
BNY Mellon Foundation  
The Buhl Foundation  
Jack Buncher Foundation  
Ciervo Foundation  
Clark Hunter Foundation  
The George and Ada Davidson Family  
Fund of The Pittsburgh Foundation  
Eden Hall Foundation  
EQT Foundation  
Federated Investors Foundation, Inc.  
Giant Eagle Foundation  
The Glenn Charitable Trust Fund of  
The Pittsburgh Foundation  
The Grable Foundation  
Irving and Aaronel deRoy Gruber  
Charitable Foundation  
The Heinz Endowments  
Howmet Aerospace Foundation  
Milton G. Hulme Charitable Foundation  
The Curtis I. Kossman Foundation

Lilly Endowment Inc.  
MAK Fund of The Pittsburgh Foundation  
David J. Malone Foundation  
The John R. and Margaret S.  
McCartan Charitable Fund of  
The Pittsburgh Foundation  
The Pittsburgh Foundation  
Pittsburgh Penguins Foundation  
PPG Foundation  
Richard King Mellon Foundation  
Sachnoff Charitable Family Foundation  
The Edith L. Trees Charitable Trust

## Public Support

Allegheny Intermediate Unit  
Commonwealth of Pennsylvania,  
The Pennsylvania Tourism Office  
Institute of Museum and Library Services  
Pennsylvania Council of the Arts, a state  
agency funded by the Commonwealth  
of Pennsylvania and the National  
Endowment for the Arts  
Pennsylvania Historical and Museum  
Commission's Cultural and Historical  
Support Program, a program funded by  
the Commonwealth of Pennsylvania  
Taxpayers of Allegheny County through  
a public grant from the Allegheny  
Regional Asset District (RAD)  
U.S. Department of Treasury,  
under the administration of the  
Commonwealth of Pennsylvania,  
Department of Community and  
Economic Development  
U.S. National Science Foundation



## Tribute Gifts

In honor of The Broadhurst Family  
Bill and Debbie Demchak  
Kent and Martha McElhattan

In memory of Dan Carney  
Beth Parisi

In memory of Beth Cohen  
Dr. and Mrs. Charles Cohen  
Mark, Aidan, Sarah, and  
Katherine Demkee

In honor of Bob Denove  
Audia Group

In memory of Gary W. Geiger  
Elyse A. Morgan

In honor of Bonnie S. Geiger  
Elyse A. Morgan

In honor of Everett Gerber  
The Walde Family

In memory of Walter Grigoruk  
Ben and Tanya Clements

In honor of Peter and Louise Maiz  
Adina and Frank Schiffman  
Christine Waller and Pedro Maiz

In honor of Matthew Meade  
Richard J. and Mary Rodgers Schubert

In honor of Sue Midkiff and Bill Fink  
Michael Duckworth and  
Tracy Howe

In memory of Mary Noschese  
Kip Noschese

In honor of Owen's Bar Mitzvah  
Janie Katz

In memory of Tony Parisi  
Peggy Carney  
Beth Parisi

In memory of Elma Peters  
Dean and Patricia Peters

In memory of Mary Poropatich  
Anonymous

In honor of Evan Rosenberg  
Kyle Solomon

In memory of Benjamin TJ Sakel  
Sharen L. Sakel

In honor of Bob Stewart  
Dr. Elaine A. King

In memory of Mrs. Aileen D. Werner  
Ben and Tanya Clements  
Amy Kellman

In memory of Frances H. Wilson  
Jane Werner and Robert Rutkowski

## Gifts of Art and Objects

Dr. Elaine A. King  
Cecile H. Levenson  
National Association of Watch & Clock  
Collectors, Chapter 37  
Laurence E. Paul

## Lifelong Learners

Anonymous  
Karen and Jim Larrimer  
Thomas H. McIntosh<sup>†</sup>  
Nellie P. Meyers<sup>†</sup>  
Sally E. Yunis<sup>†</sup>

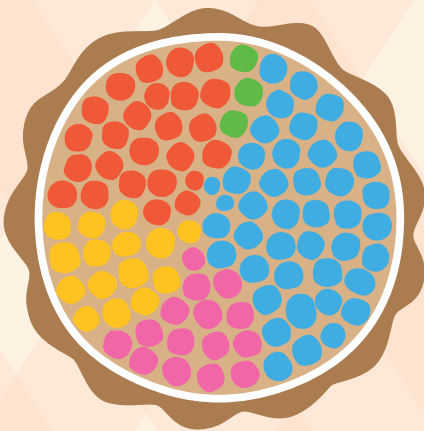
**The Lifelong Learners group honors those who have made generous planned gift commitments to the Museum.**

<sup>†</sup> deceased

# Financials

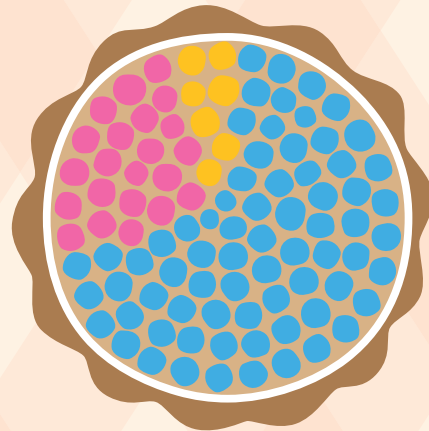
For more than 40 years, Children's Museum of Pittsburgh has maintained financial stability as it has adapted to changing economic markets and worked diligently to meet the needs of children and families in our community and beyond. We remain steadfast in our commitment to provide innovative learning experiences that foster kindness, creativity, curiosity and joy.

## FY 2025 Support and Revenue by Source



- Contributed Income: **42%**
- Investments: **15%**
- Exhibit Sales, Rentals and Contracts: **15%**
- Attendance Driven Revenue: **25%**
- Special Events: **3%**

## FY 2025 Expenses by Functional Grouping

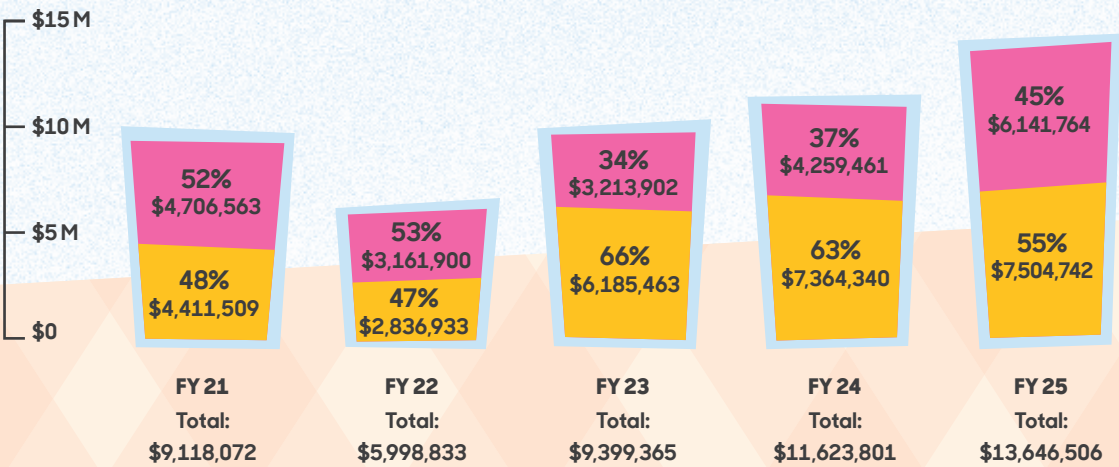


- Programs and Grant Funded Projects: **71%**
- Support Services: **22%**
- Fundraising: **7%**



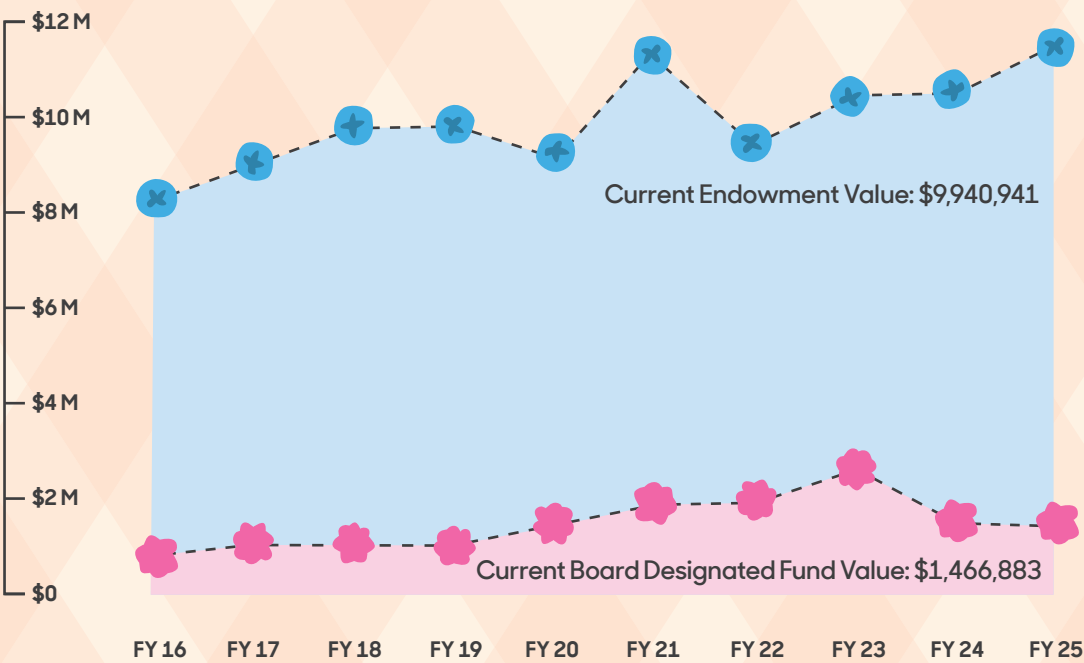
# Earned and Contributed Revenue Trends

- Earned Revenue
- Contributed Revenue



# Endowment and Board Designated Trends

- Endowment Assets
- Board Designated Fund



# The Next Chapter

Our Museum is well known and widely celebrated as one of the best places for children. We are growing our offerings for learners and creators of all ages with two new memberships.

Aligned with our role as a community hub for creativity and building on our intergenerational approach to learning, our Creatives Membership welcomes adult makers, educators and hobbyists into MuseumLab's inspiring, dynamic spaces to use our artmaking tools and services. MlabPASS offers rich skill-building and social experiences such as workshops, game nights and open studio time for youth in grades 6–8 — no parents required!







You can learn more  
about the Creatives  
Membership and  
mlabPASS on the  
MuseumLab website.



[museumlab.org/  
creatives-membership](https://museumlab.org/creatives-membership)

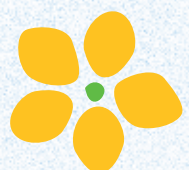


[museumlab.org/  
visit/mlabpass](https://museumlab.org/visit/mlabpass)



"The museum offers more sophisticated and joyful public art – including an approaching herd of elephants – across leafy Allegheny Commons. The museum also has a 'Kindness Gallery' dedicated to Mister Rogers, who lived in Pittsburgh and filmed his popular show here."

– National Geographic



"Great place to spend time with your kids. On top of already awesome exhibitions, they regularly change some of the exhibits. Must check out place if you have a child."

– Mendy

"Not only did my son enjoy it, but some activities were also quite fun for adults, making it a great experience to share."

– Josh E.



"Impressive museum centered around piquing the interest of children of all ages. Exhibits are ever-changing and evolving, which allows for repeat visits to be consistently interesting to children. There are interactive exhibits and activities that appeal to a myriad of interests. I wholeheartedly recommend a visit to this museum."

– Shanon L.

## MISSION STATEMENT

Children's Museum of Pittsburgh provides innovative and inclusive museum experiences that inspire kindness, creativity, curiosity and joy for all learners.



children's  
museum™  
pittsburgh